

SWAGE EYE

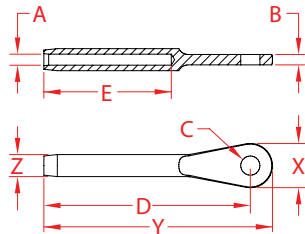
316 STAINLESS STEEL



Import



Precision
Machined



ITEM	A (wire)	B	C	D	E	BEFORE (swage)	AFTER (swage)	X (height)	Y (length)	Z (width)	WT (lb)	PACKAGING TYPE	EACH (qty)	INNER (qty)	CARTON (qty)	UPC
S0733-0001	1/16"	0.09"	0.19"	1.63"	1.04"	0.16"	0.14"	0.37"	1.82"	0.16"	0.01	POLYBAG	1	100	1,000	791506049487
S0733-0002	3/32"	0.10"	0.19"	2.04"	1.26"	0.22"	0.19"	0.45"	2.30"	0.22"	0.02	POLYBAG	1	100	1,000	791506049494
S0733-0003	1/8"	0.19"	0.19"	2.34"	1.51"	0.25"	0.22"	0.51"	2.56"	0.25"	0.03	POLYBAG	1	100	1,000	791506049500
S0733-0004	5/32"	0.19"	0.25"	2.68"	1.76"	0.30"	0.25"	0.70"	3.02"	0.30"	0.05	POLYBAG	1	10	600	791506049517
S0733-0005	3/16"	0.26"	0.31"	3.02"	2.01"	0.36"	0.31"	0.82"	3.45"	0.36"	0.09	POLYBAG	1	50	500	791506049524
S0733-0006	7/32"	0.29"	0.31"	3.38"	2.26"	0.43"	0.38"	0.84"	3.85"	0.43"	0.13	POLYBAG	1	10	250	791506049531
S0733-0007	1/4"	0.31"	0.38"	3.76"	2.51"	0.49"	0.44"	1.00"	4.33"	0.49"	0.20	POLYBAG	1	10	500	791506049548
S0733-0009	5/16"	0.34"	0.44"	4.55"	3.01"	0.64"	0.56"	1.23"	5.24"	0.64"	0.38	POLYBAG	1	10	300	791506049555
S0733-0010	3/8"	0.38"	0.50"	5.56"	3.51"	0.70"	0.63"	1.45"	6.37"	0.70"	0.57	POLYBAG	1	10	250	791506049562
S0733-0013	1/2"	0.47"	0.63"	7.32"	4.70"	0.84"	0.75"	1.86"	8.36"	0.84"	1.07	POLYBAG	1	1	25	791506049579

NOTE:

**MACHINE SWAGE ONLY. DESIGNED TO MATE WITH S0734-SERIES SWAGE JAWS.
ALL DIMENSIONS ARE NOMINAL (+/- 3%) AND ARE SUBJECT TO CHANGE WITHOUT NOTICE.**